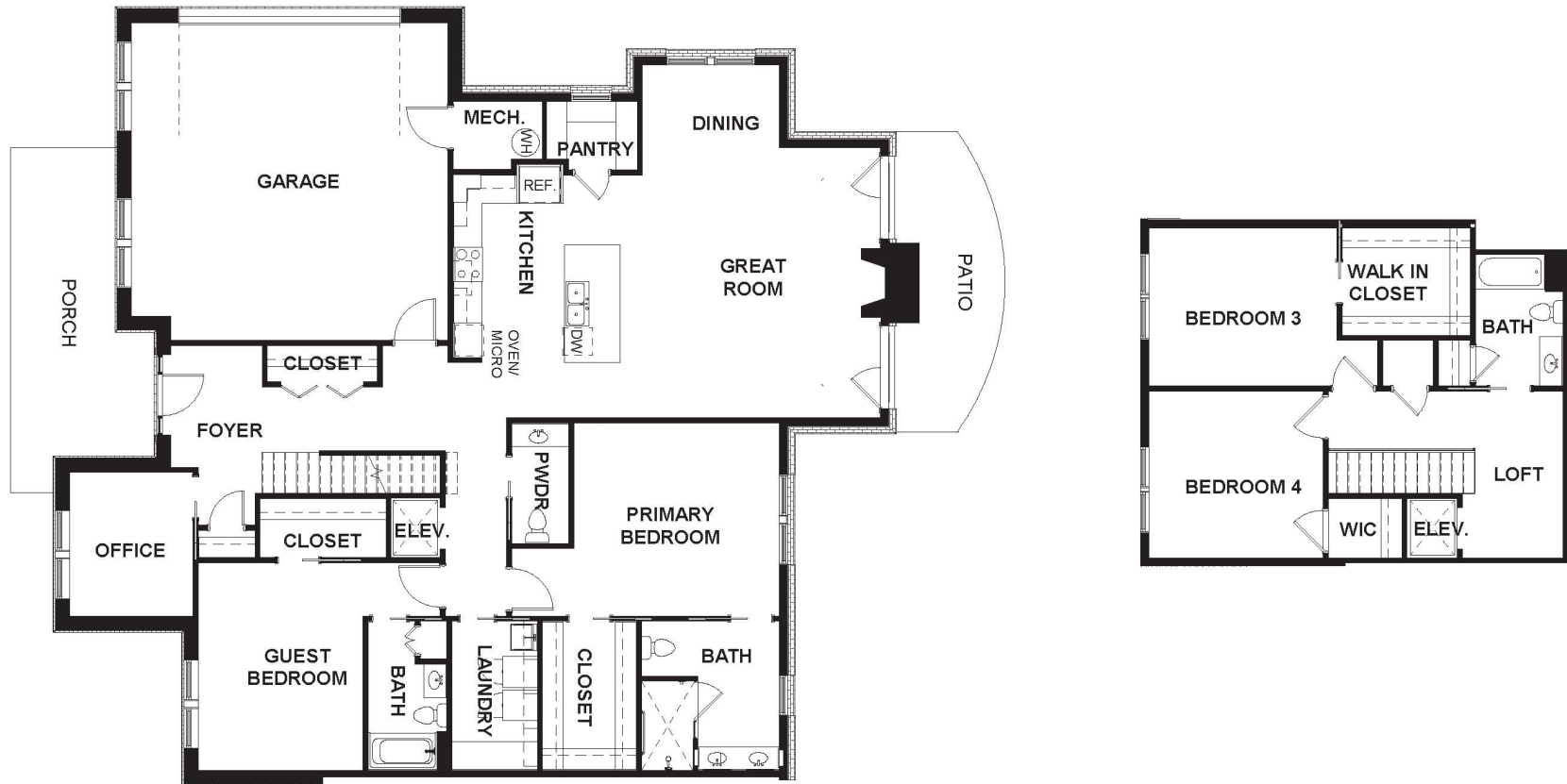


Cape Henry | TWO-STORY TERRACE HOME

Four Bedroom/Three Bath/Office with Screened Porch plus Two-Car Garage | 2,400 sq. ft.

This plan is a general representation only. Final square footage and layout may vary.



ANCHOR COVE *at* WILLIAMSBURG LANDING

5700 Williamsburg Landing Dr., Williamsburg, VA 23185 | 1-800-554-5517 | WAnchorCove.org

