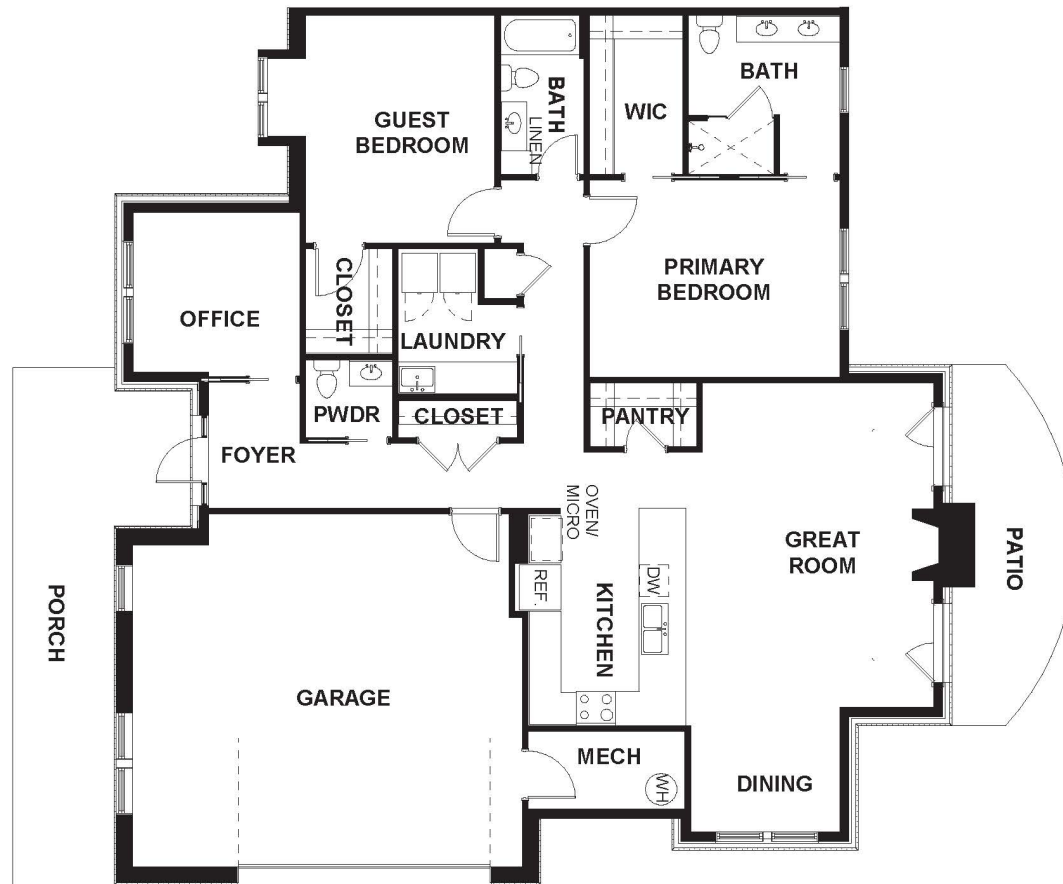


# Cape Ann | TERRACE HOME

Two Bedroom/Two Bath/Office with Screened Porch plus Two-Car Garage | 1,680 sq. ft.

*This plan is a general representation only. Final square footage and layout may vary.*



ANCHOR COVE *at* WILLIAMSBURG LANDING

5700 Williamsburg Landing Dr., Williamsburg, VA 23185 | 1-800-554-5517 | WAnchorCove.org

